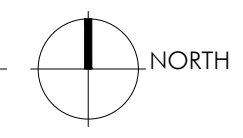


1 SKETCH PLAN - FIRST FLOOR (OPTION #2)

SCALE: 1/4" = 1'-0"



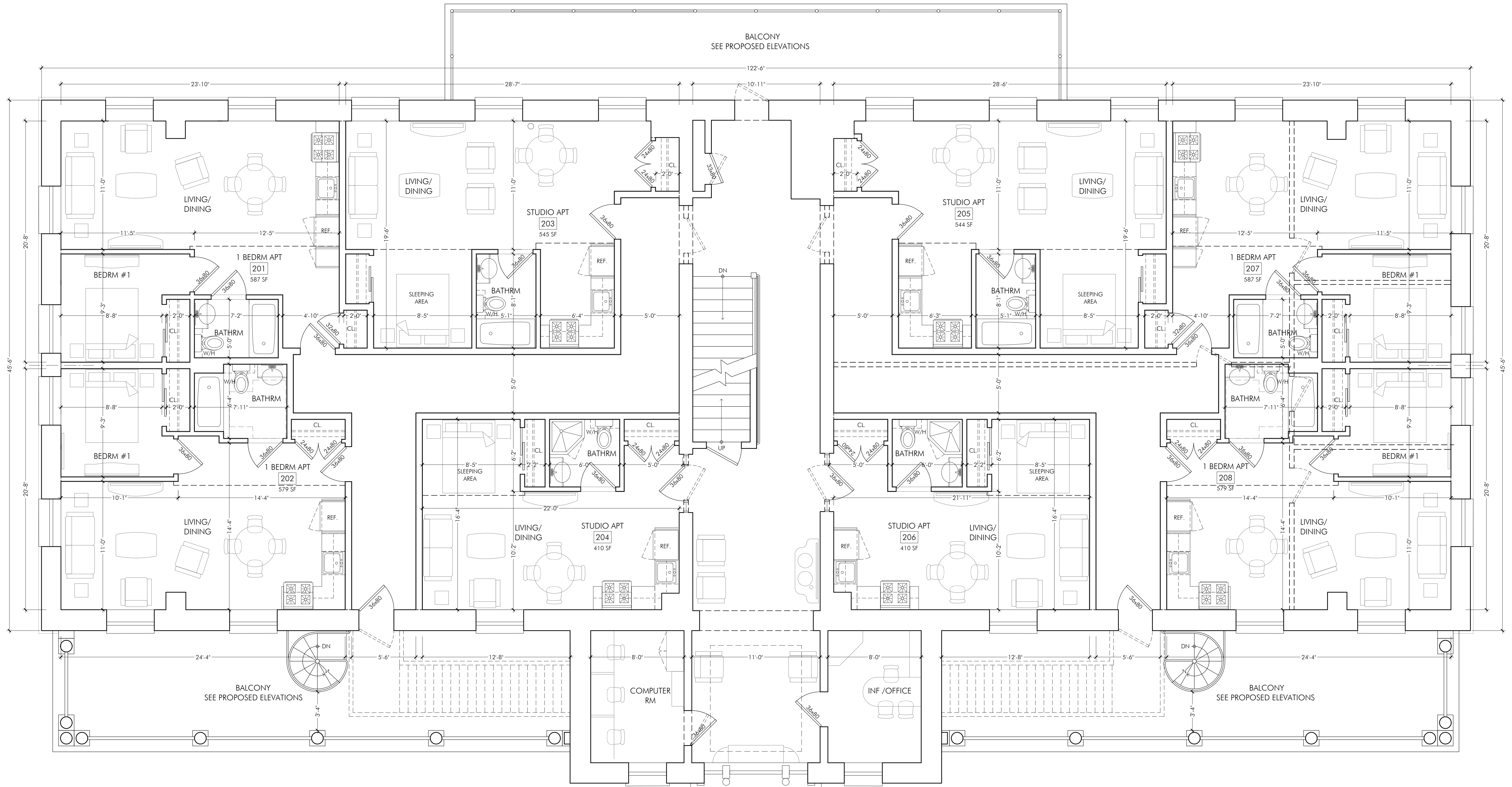
DESIGNED BY:				
DRAWN BY:				
CHECKED BY:				
SCALE:				
NOT FOR CONSTRUCTION, SUBJECT TO BUILDING DEPT. REVIEW & INCORPORATION OF COMMENTS				
NO.	DATE	DRAWN	CHECKED	DESCRIPTION
1	12/22/17	-	-	PRELIMINARY

L+C DESIGN CONSULTANTS PA
ARCHITECTURE ENGINEERING PLANNING
 One Marine Plaza, Suite 205 North Bergen NJ 07047
 Phone 201-866-9583 Fax 201-866-7395

GRACE LYNCH AIA
 N.J. LIC. NO. 10917

CONCEPT
 FIRST FLOOR PLAN
 BARRACKS BUILDING #25
 FORT HANCOCK, SANDY HOOK, NEW JERSEY

A-01
 LC 0758



1 SKETCH PLAN - SECOND FLOOR (OPTION #2)
SCALE: 1/4" = 1'-0"



NO.	DATE	DRAWN	CHECKED	DESCRIPTION
1	12/22/17	-	-	PRELIMINARY

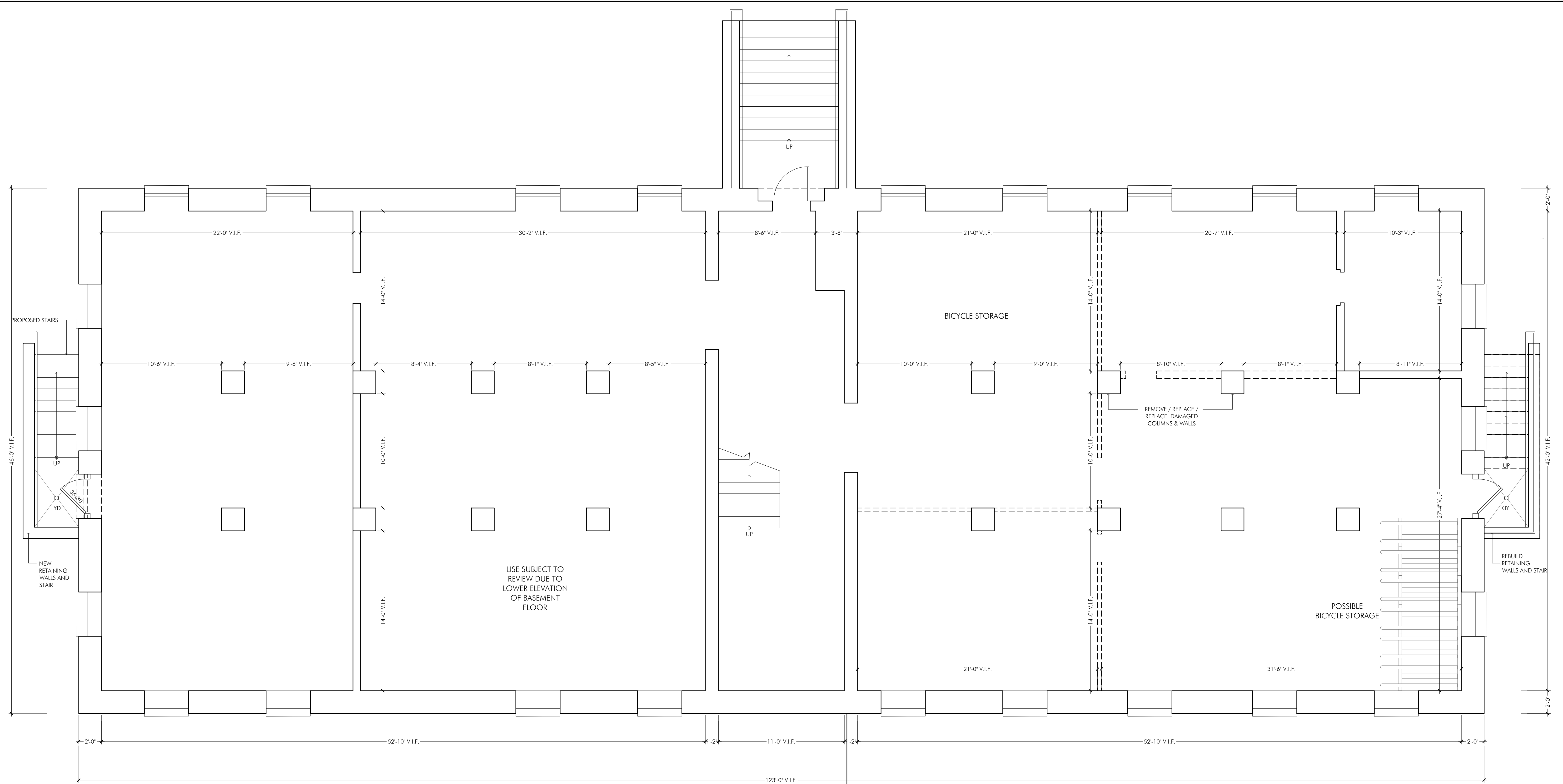
DESIGNED BY:
DRAWN BY:
CHECKED BY:
SCALE:
NOT FOR CONSTRUCTION,
SUBJECT TO BUILDING DEPT.
REVIEW & INCORPORATION
OF COMMENTS

L+C DESIGN CONSULTANTS PA
ARCHITECTURE ENGINEERING PLANNING
One Marine Plaza, Suite 205 North Bergen NJ 07047
Phone 201-866-9583 Fax 201-866-7395

GRACE LYNCH AIA
N.J. LIC. NO. 10917

CONCEPT
SECOND FLOOR PLAN
BARRACKS BUILDING #25
FORT HANCOCK, SANDY HOOK, NEW JERSEY

A-02
LC 0758



NOTE: UTILITY LOCATIONS TBD.

1 SKETCH PLAN - BASEMENT FLOOR

SCALE: 1/4" = 1'-0"

NO.	DATE	DRAWN	CHECKED	DESCRIPTION
1	12/22/17	-	-	PRELIMINARY

DESIGNED BY:
 DRAWN BY:
 CHECKED BY:
 SCALE:
 NOT FOR CONSTRUCTION,
 SUBJECT TO BUILDING DEPT.
 REVIEW & INCORPORATION
 OF COMMENTS

L+C DESIGN CONSULTANTS PA
 ARCHITECTURE ENGINEERING PLANNING
 One Marine Plaza, Suite 205 North Bergen NJ 07047
 Phone 201-866-9583 Fax 201-866-7395

GRACE LYNCH AIA
 N.J. LIC. NO. 10917

CONCEPT
 BASEMENT FLOOR PLAN
 BARRACKS BUILDING #25
 FORT HANCOCK, SANDY HOOK, NEW JERSEY

A-03

LC 0758



1 PROPOSED ELEVATION - NORTH

SCALE: 1/4" = 1'-0"

NO.	DATE	DRAWN	CHECKED	DESCRIPTION
1	12/22/17	-	-	PRELIMINARY

DESIGNED BY:
 DRAWN BY:
 CHECKED BY:
 SCALE:
 NOT FOR CONSTRUCTION,
 SUBJECT TO BUILDING DEPT.
 REVIEW & INCORPORATION
 OF COMMENTS

L+C DESIGN CONSULTANTS PA
 ARCHITECTURE ENGINEERING PLANNING
 One Marine Plaza, Suite 205 North Bergen NJ 07047
 Phone 201-866-9583 Fax 201-866-7395

GRACE LYNCH AIA
 N.J. LIC. NO. 10917

CONCEPT
 PROPOSED ELEVATION - NORTH
 BARRACKS BUILDING #25
 FORT HANCOCK, SANDY HOOK, NEW JERSEY

A-05

LC 0758



1 PROPOSED ELEVATION - EAST
SCALE: 1/4" = 1'-0"

ELEVATION NOTES
 (01) xxxx

NO.	DATE	DRAWN	CHECKED	DESCRIPTION
1	12/22/17	-	-	PRELIMINARY

DESIGNED BY:
 DRAWN BY:
 CHECKED BY:
 SCALE:
 NOT FOR CONSTRUCTION,
 SUBJECT TO BUILDING DEPT.
 REVIEW & INCORPORATION
 OF COMMENTS

L+C DESIGN CONSULTANTS PA
 ARCHITECTURE ENGINEERING PLANNING
 One Marine Plaza, Suite 205 North Bergen NJ 07047
 Phone 201-866-9583 Fax 201-866-7395

GRACE LYNCH AIA
 N.J. LIC. NO. 10917

CONCEPT
 PROPOSED ELEVATION - EAST
 BARRACKS BUILDING #25
 FORT HANCOCK, SANDY HOOK, NEW JERSEY

A-07
 LC 0758



1 PROPOSED ELEVATION - WEST
SCALE: 1/4" = 1'-0"

2 EXISTING ELEVATION - WEST
SCALE: 1/4" = 1'-0"

ELEVATION NOTES
(01) xxxxx

					DESIGNED BY:	L+C DESIGN CONSULTANTS PA	GRACE LYNCH AIA	CONCEPT PROPOSED - WEST	A-08
					DRAWN BY:				
					CHECKED BY:				
					SCALE:				
					NOT FOR CONSTRUCTION, SUBJECT TO BUILDING DEPT. REVIEW & INCORPORATION OF COMMENTS	ARCHITECTURE ENGINEERING PLANNING			
1	12/22/17	-	-	PRELIMINARY		One Marine Plaza, Suite 205 North Bergen NJ 07047		BARRACKS BUILDING #25	
NO.	DATE	DRAWN	CHECKED	DESCRIPTION		Phone 201-866-9583 Fax 201-866-7395	N.J. LIC. NO. 10917	FORT HANCOCK, SANDY HOOK, NEW JERSEY	LC 0758